

THE PACKARD

201 NW 10th (N. Robinson at Tenth), Oklahoma City, OK

OFFICE/RETAIL SPACE FOR LEASE



Price Edwards & Company
 210 Park Ave. Suite 1000
 Oklahoma City, OK 73102
 (405) 843-7474 PHONE
 (405) 236-1849 FAX
 www.priceedwards.com



Building Profile and Amenities:

The historic Packard Building at NW 10th and Robinson was originally built in 1925 and home to the city's Packard automobile dealership. The building combines the best of revival style brick structures in the dynamic Midtown District with the implementation of contemporary design and construction techniques. Sporting an abundant glass line, 14' ceiling heights in a premier location, this property's quality is only surpassed by its versatility of use.

The building is approximately 36,741 square feet with two floors. Multiple divisions and sizes available.

There is surface parking to the south and to the northwest of the building.

This building is located in the heart of Midtown in close proximity to the central business district, St. Anthony's Hospital and the downtown and midtown YMCA. Fine dining and meeting establishments are within walking distance along with the vibrant Bricktown area. The construction of the dramatic common areas will include stone flooring, one elevator and lavish accessories.

Demographics

Radius	Population	Average HH Income
1	8,945	\$53,877
3	73,139	\$41,972
5	189,017	\$45,804

Traffic Counts

Robinson	North	2,200	South	2,500
NW 10th	East	13,499	West	9,421

FOR MORE INFORMATION, CONTACT:

Ev Ernst ernst@priceedwards.com
(405) 843-7474

THE PACKARD

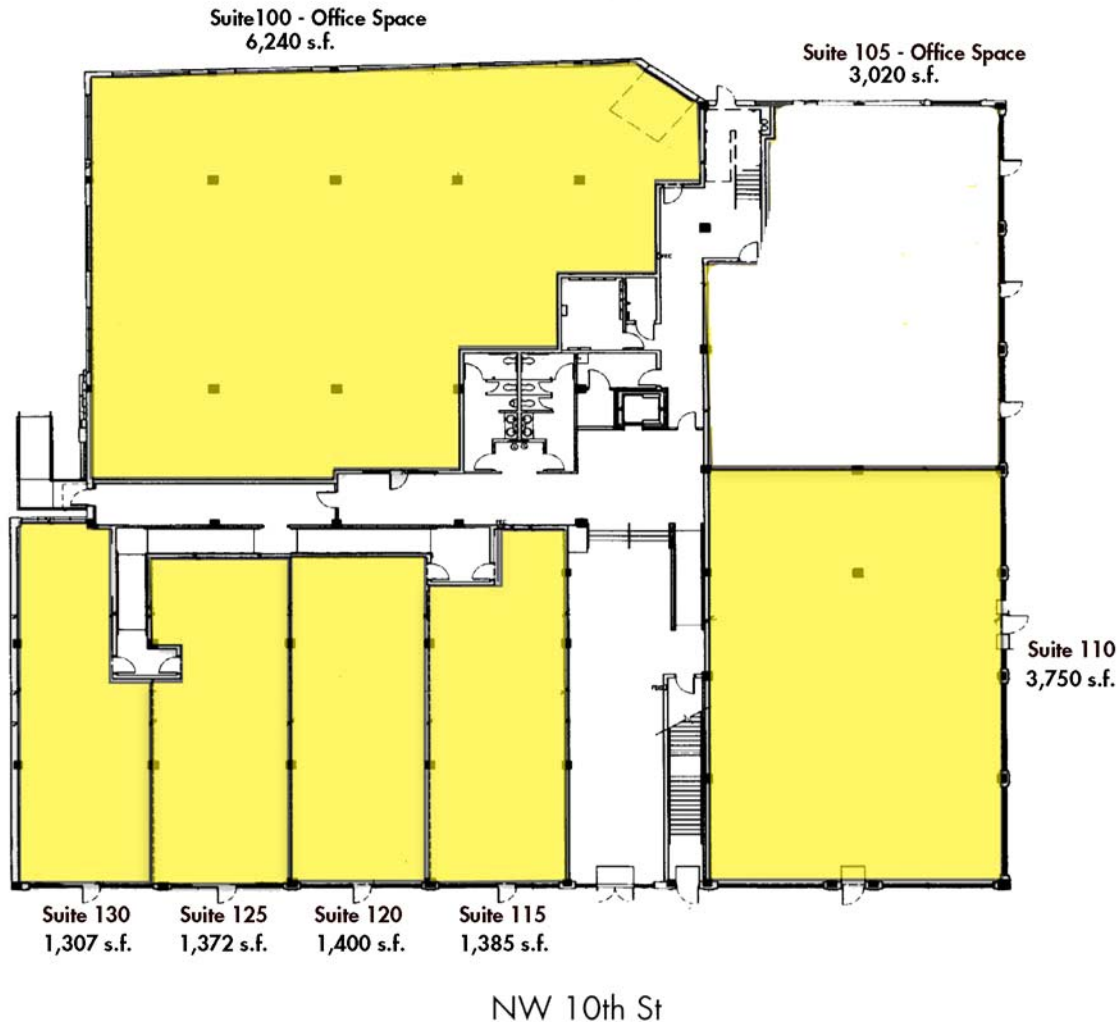
201 NW 10th (N. Robinson at Tenth), Oklahoma City, OK

OFFICE/RETAIL SPACE FOR LEASE



Price Edwards & Company
210 Park Ave. Suite 1000
Oklahoma City, OK 73102
(405) 843-7474 PHONE
(405) 236-1849 FAX
www.priceedwards.com

First Floor



The 2nd floor is 100% Leased

- Space 130 1,307 square feet +/-
- Space 125 1,372 square feet +/-
- Space 120 1,400 square feet +/-
- Space 115 1,385 square feet +/-
- Space 110 3,750 square feet +/-
- Space 105 Occupied
- Space 100 6,240 square feet +/- Office