

# FRANCIS PROFESSIONAL BUILDING

1221 N. Francis, Oklahoma City, OK

OFFICE SPACE FOR LEASE



Price Edwards & Company  
210 Park Ave. Suite 1000  
Oklahoma City, OK 73102  
Phone: (405) 843-7474  
Fax: (405) 236-1849  
www.priceedwards.com



Now available a beautiful Brownstone Class "A" conversion in the highly desirable Midtown District. This building has been totally remodeled including structural, with improvements and upgrades too numerous to mention. ADA compliant, this unique building retains the beauty of a 30's design but incorporates all the amenities desired by the current office user.

- Single or, multi-tenant occupancy possible.
- 8,329 square feet rentable, or 3,170 rsf or 3,559 rsf, split with both featuring first and second floors.
- Cased thermo-pane window that open.
- New carpet and paint.
- On-site parking.
- Walking distance to Midtown entertainment district and St. Anthony's Medical Campus.
- Fully furnished, dry basement available for lease.

**For more information, contact:**

**Derek James** [djames@priceedwards.com](mailto:djames@priceedwards.com)

**Tom Fields** [tfields@priceedwards.com](mailto:tfields@priceedwards.com)

**(405) 843-7474**

# FRANCIS PROFESSIONAL BUILDING

1221 N. Francis, Oklahoma City, OK

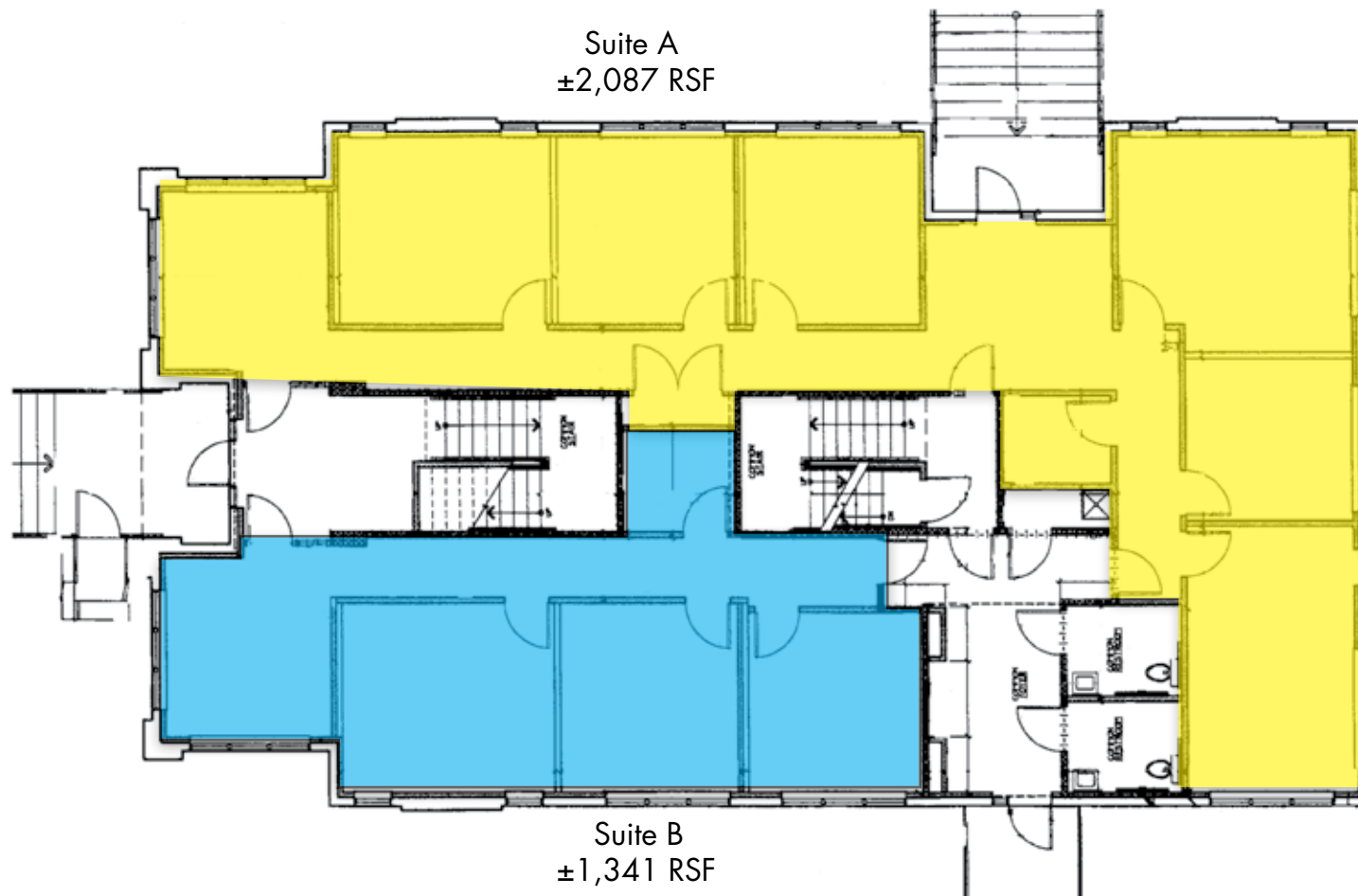
OFFICE SPACE FOR LEASE



Price Edwards & Company  
210 Park Ave. Suite 1000  
Oklahoma City, OK 73102  
Phone: (405) 843-7474  
Fax: (405) 236-1849  
www.priceedwards.com

Suite A = yellow  
Suite B = blue

## First Floor



# FRANCIS PROFESSIONAL BUILDING

1221 N. Francis, Oklahoma City, OK

OFFICE SPACE FOR LEASE



Price Edwards & Company  
210 Park Ave. Suite 1000  
Oklahoma City, OK 73102  
Phone: (405) 843-7474  
Fax: (405) 236-1849  
www.priceedwards.com

Suite A = yellow  
Suite B = blue

## Second Floor

Suite A  
±1,083 RSF



Suite B  
±2,218 RSF